

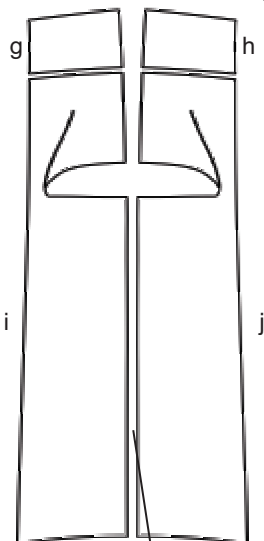
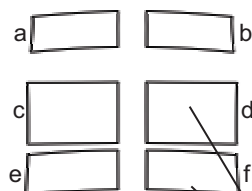
DODGE CHALLENGER

Rally Stripe Graphic Kit 2 for Dodge Challenger

'15-Current SRT Hellcat

Parts List

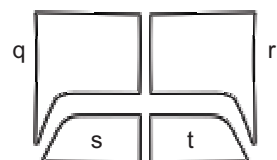
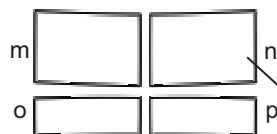
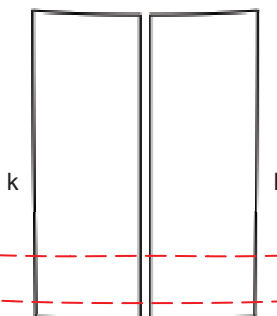
ATD-DDGECLGRGRPH058



Due to the difficulty of installing a one (1) piece stripe on the Front Bumper, a two (2) piece spliceable set is provided.

The Front Bumper Top pieces are designed to splice/overlap approximately 0.20" (5.08mm) over the Front Bumper Front pieces just after the front leading edge of the Front Bumper at time of installation.

Set 1" (25.40mm) spacing at time of installation



Part Number

ATD-DDGECLGRGRPH058a
ATD-DDGECLGRGRPH058b
ATD-DDGECLGRGRPH058c
ATD-DDGECLGRGRPH058d
ATD-DDGECLGRGRPH058e
ATD-DDGECLGRGRPH058f
ATD-DDGECLGRGRPH058g
ATD-DDGECLGRGRPH058h
ATD-DDGECLGRGRPH058i
ATD-DDGECLGRGRPH058j
ATD-DDGECLGRGRPH058k
ATD-DDGECLGRGRPH058l
ATD-DDGECLGRGRPH058m
ATD-DDGECLGRGRPH058n
ATD-DDGECLGRGRPH058o
ATD-DDGECLGRGRPH058p
ATD-DDGECLGRGRPH058q
ATD-DDGECLGRGRPH058r
ATD-DDGECLGRGRPH058s
ATD-DDGECLGRGRPH058t

Item

Valance Left
Valance Right
Front Bumper Front Left
Front Bumper Front Right
Front Bumper Top Left
Front Bumper Top Right
Nose Left
Nose Right
Hood Left
Hood Right
Rear Lid Left
Rear Lid Right
Factory Spoiler Top Left
Factory Spoiler Top Right
Factory Spoiler Rear Left
Factory Spoiler Rear Right
Rear Bumper Left
Rear Bumper Right
Rear License Well Left
Rear License Well Right

Cost

\$5.95
\$5.95
\$11.95
\$11.95
\$7.95
\$7.95
\$9.95
\$9.95
\$51.95
\$51.95
\$34.95
\$34.95
\$10.95
\$10.95
\$6.95
\$6.95
\$21.95
\$21.95
\$9.95
\$9.95

Installation Note: For Challengers with factory Spoiler, temporary removal assists with application of the Rear Lid piece. Alternatively, careful trimming of the Rear Lid piece prior to installation may allow Spoiler to remain in place.

Note: Spacing of Stripes as shown shall be performed at time of installation. Kit does not come pre-spaced.

Due to the difficulty of installing a one (1) piece stripe on the Rear Spoiler, a two (2) piece spliceable set is provided.

The Rear Spoiler Top pieces are designed to splice/overlap approximately 0.20" (5.08mm) over the Rear Spoiler Rear pieces just after the rear edge of the Spoiler at time of installation.

Auto Trim DESIGN®

autotrimdesign.com