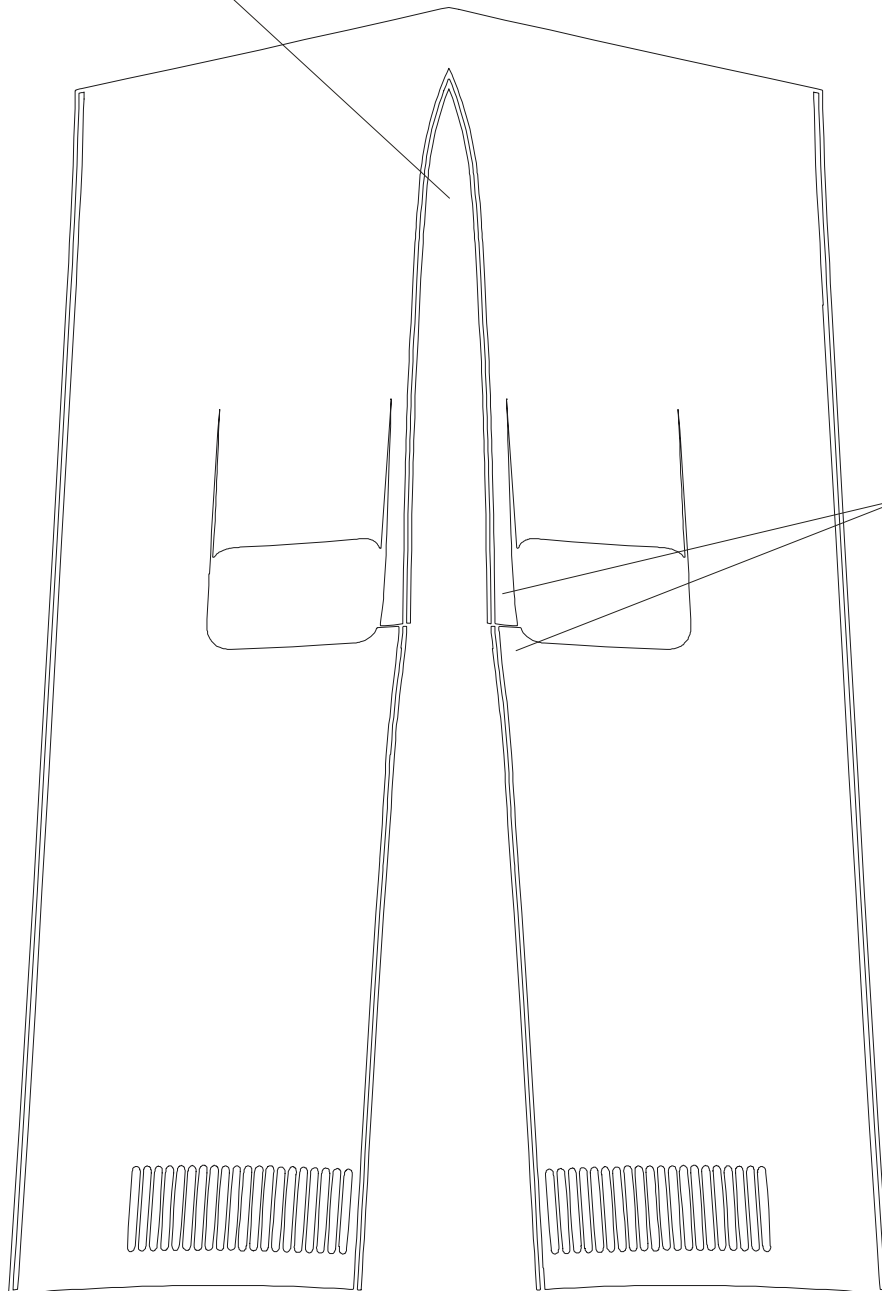


BUICK

GSX

Center spacing on vehicle
should be set for about 1.875"
(47.625mm).

**Buick Skylark GS/GSX
Hood Graphic Kit 1
ATD-BUICKGSXGRPH1**



Installation Tip: We suggest setting the rear portion of the Hood Vent area first. Once the rear has been set, carefully peel the application paper off of the overlapping front piece so that it can be stretched slightly into place with an approximate 1/16" (1.5875mm) overlap.

Note: Kit is manufactured with an approximate .25" (6.35mm) extra at the front and rear Hood edges for wrapping/trimming.



autotrimdesign.com

Copyright 2007, Auto Trim DESIGN.